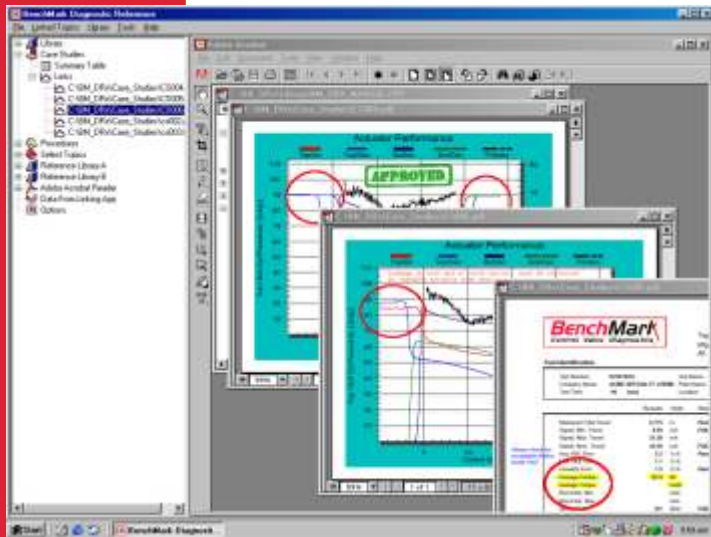
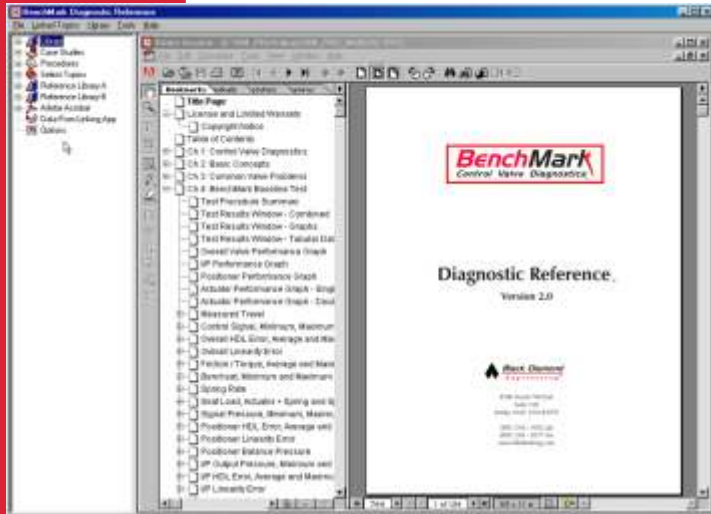


BenchMark

Control Valve Diagnostics



Immediately Access:

- ✓ BenchMark Library
- ✓ Customized Case Studies
- ✓ Customized Procedures
- ✓ Customized Linkage Rules
- ✓ Select Topics
- ✓ User Reference Libraries

Diagnostic Reference DRx

“How do I communicate my diagnostic experience to my new operators without repeating the same time-consuming, expensive learning curve?”

Your valve diagnostic experience was gained from many hard-learned, expensive lessons - that you don't want to repeat or pay for again. You need a tool to help efficiently transfer your valve diagnostics and repair experience to your **BenchMark** operators.

Consider the current situation. Even though twenty-eight separate parameters are reported for each Baseline test, the integral **BenchMark** Performance Standards makes it a simple matter to determine which test results meet the valve owner's specifications. Each parameter is clearly marked as **PASS** or **FAIL**. However, from that point on, the burden of identifying, remembering and following the proper corrective actions shifts to each individual **BenchMark** operator. **That is, until now.**

Whether you are using the **BenchMark** test system or the desktop **BenchMark Data MGR** application simply click on the Baseline test parameter of interest and **BenchMark Diagnostic Reference DRx** will automatically link you to the appropriate information. Clear, concise definitions, illustrations and checklists are provided for your review, printing or annotation. Additionally, any registered Case Studies or Procedures that meet your specific linking criteria are similarly displayed.

BenchMark Diagnostic Reference DRx helps to improve and equalize the diagnostic skills of your various operators and helps ensure consistency and adherence to your desired repair, safety and turn-around procedures.

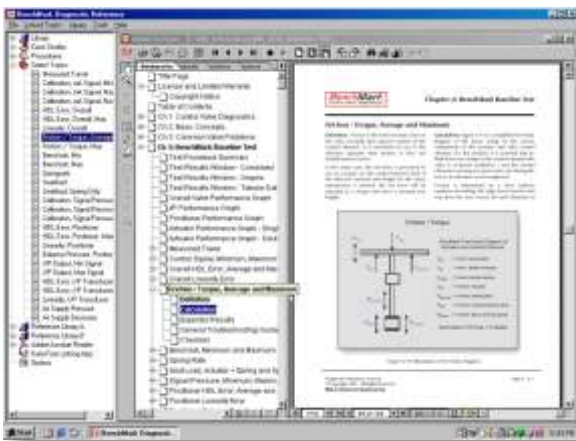
Make every operator your BEST operator.



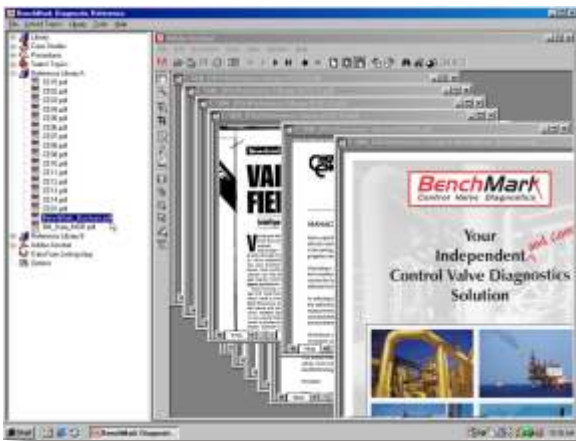
Link automatically from BenchMark test system or BenchMark Data MGR



Control Case Studies and Procedures with your specific criteria.



Clear, concise definitions, illustrations and checklists.



Includes two Reference Libraries to manage your articles and documents.



Diagnostic Reference DRx™

Link seamlessly from your **BenchMark** Control Valve Diagnostics system or your desktop **BenchMark** Data MGR application to a comprehensive, personalized on-screen reference and analysis library.

Integrated portable document format (PDF) tools help you create, view, annotate and print the Case Studies and Procedures. Case Studies can be created directly from standard **BenchMark** reports and graphs with notes, highlights and other annotations added to illustrate and communicate your findings.

A table-based management system provides straightforward registration and linking of your Case Studies and Procedures. Linking criteria, based on valve configuration and test results, are easily customized to control which Case Studies or Procedures are displayed for each parameter.

In addition to the **BenchMark** Library, two user defined Reference Libraries provide storage and management for an essentially unlimited number of your technical articles and reference documents.

System Requirements

- Windows 95/98/Me or Windows NT 4.0/2000
- 64 MB RAM Minimum
- 10 MB Available Hard Disk Space
- 200 MHz Pentium Processor or higher
- PC/VGA or Higher Resolution Monitor

For More Information

www.benchmarkvalvediagnostics.com

1- 800 847-5088



14884 So. Heritagecrest Way
Suite B
Bluffdale, Utah USA 84065

(801) 256 - 0202 phone
(801) 256 - 0217 fax

Copyright 2001-2004 Black Diamond Engineering, All Rights Reserved

BenchMark Control Valve Diagnostics and Black Diamond Engineering are trademarks of Black Diamond Engineering, Inc. Bluffdale, Utah USA. All rights are reserved. All other trademarks and tradenames shown are the property of their respective owners.

Black Diamond Engineering reserves the right to change or modify specifications without notice.